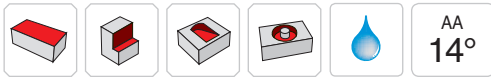
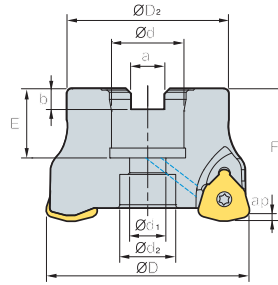


HRMDC(M)09



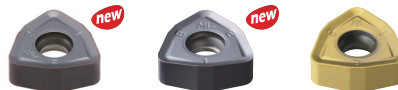
AA
14°
• AR: -7°
• RR: -12° ~ -18°

(mm)

Designation	⚙️	ØD	ØD2	Ød	Ød1	Ød2	a	b	E	F	ap	kg	Bolt		
HRMDCM	09040HR-3	3	40	34	16	9	14	8.4	5.6	19	40	1.5	0.2	SB0825	
	09040HR-4	4	40	34	16	9	14	8.4	5.6	19	40	1.5	0.2		
	09050HR-4	4	50	42	22	11	18	10.4	6.3	21	40	1.5	0.3		SB1025
	09050HR-5	5	50	42	22	11	18	10.4	6.3	21	40	1.5	0.3		
	09063HR-5	5	63	49	22	11	18	10.4	6.3	21	40	1.5	0.5		SB1025
	09063HR-6	6	63	49	22	11	18	10.4	6.3	21	40	1.5	0.5		
	09080HR-6	6	80	57	27	14	20	12.4	7	23	50	1.5	1.1		SB1230
	09080HR-7	7	80	57	27	14	20	12.4	7	23	50	1.5	1.1		
	09100HR-7	7	100	67	32	18	26	14.4	8	25	50	1.5	1.7		SB1630
09100HR-8	8	100	67	32	18	26	14.4	8	25	50	1.5	1.7			
HRMDC	09080HR-6	6	80	57	25.4	14	20	9.5	6	24	50	1.5	1.1	SB1230	
	09080HR-7	7	80	57	25.4	14	20	9.5	6	24	50	1.5	1.1		
	09080HR-31.75-6	6	80	67	31.75	18	26	12.7	8	32	63	1.5	1.5	SB1630	
	09080HR-31.75-7	7	80	67	31.75	18	26	12.7	8	32	63	1.5	1.5		
	09100HR-7	7	100	67	31.75	18	26	12.7	8	32	63	1.5	2.1	SB1630	
	09100HR-8	8	100	67	31.75	18	26	12.7	8	32	63	1.5	2.1		

Available inserts

WNMX-MF WNMX-ML WNMX-MM

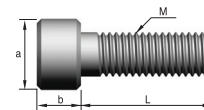


Designation	Cermet		Coated										Uncoated			page			
	CN2000	CN80	NCM325	NC530	NCM535	NCM545	PC2505	PC2510	PC3600	PC3700	PC6510	PC9530	PC9540	PC5300	PC5400		ST30A	G10	H01
WNMX 09T316ZNN-MF								●	●					●	●				E28
09T316ZNN-ML														●	●				
09T316ZNN-MM							●	●	●		●			●	●				

Available arbors

Designation	NC arbors	
HRMDCM	09040HR-□	BT□□-FMC16-□□ SK□□-FMC16-□□
	09050HR-□	BT□□-FMC22-□□
	09063HR-□	SK□□-FMC22-□□
	09080HR-□	BT□□-FMC27-□□ SK□□-FMC27-□□
	09100HR-□	BT□□-FMC32-□□ SK□□-FMC32-□□
	HRMDC	09080HR-□
09080HR-31.75-□		BT□□-FMA31.75-□□
09100HR-□		SK□□-FMA31.75-□□

Bolt



Designation	Dimensions (mm)				
	M	a	b	L	pitch
SB0825	M08	13	8	25	1.25
SB1025	M10	16	10	25	1.5
SB1230	M12	18	12	30	1.75
SB1630	M16	24	16	30	2.0

Parts

Specification		
Ø40-Ø100	FTKA0307	TW09S

Available inserts E28 Available arbors and bolt E400~E402